

WILDLIFE AND COUNTRYSIDE ACT 1981

THE DEFINITIVE MAP AND STATEMENT FOR THE PEWSEY RURAL DISTRICT COUNCIL AREA DATED 1952 AS MODIFIED UNDER THE PROVISIONS OF THE WILDLIFE AND COUNTRYSIDE ACT 1981

THE WILTSHIRE COUNCIL CHARLTON ST.PETER 2, 6 AND WILSFORD 5 DEFINITIVE MAP AND STATEMENT MODIFICATION ORDER 2023

This order is made by Wiltshire Council under section 53(2)(b) of the Wildlife and Countryside Act 1981 ("the Act") because it appears to that authority that the Definitive Map and Statement for the Pewsey Rural District Council area dated 1952 as modified under the provisions of the Wildlife and Countryside Act 1981 require modification in consequence of the occurrence of events specified in section 53(3)(c)(ii) & (iii) of the Act, namely the discovery by the authority of evidence which (when considered with all other relevant evidence available to them) shows –

- (ii) that a highway shown in the map and statement as a highway of a particular description ought to be there shown as a highway of a different description;
- (iii) that there is no public right of way over land shown in the map and statement as a highway of any description, or any other particulars contained in the map and statement require modification.

The Authority have consulted with every local authority whose area includes the land to which this order relates.

The Wiltshire Council hereby order that:

1. For the purposes of this Order the relevant date is the 8th February 2023
2. The Definitive Map and Statement for the Pewsey Rural District Council Area dated 1952 as modified under the provisions of the Wildlife and Countryside Act 1981 shall be modified as described in Parts I and II of the Schedule and shown on the plans attached to the Order.
3. This Order shall take effect on the date it is confirmed and may be cited as the Wiltshire Council Charlton St. Peter 2, 6 and Wilsford 5 Definitive Map Modification Order 2023.

THE COMMON SEAL of
WILTSHIRE COUNCIL was
hereunto affixed this 22nd day
of February 2023



14031

in the presence of:

EMMA HOLROYD

SCHEDULE

PART I

MODIFICATION OF DEFINITIVE MAP

Parish	Path No	Description of path or way to be upgraded	Modified under Section 53(3) as specified
Charlton St. Peter	2	<p>Length of bridleway, from the Charlton St. Peter and Wilsford Parish boundary to its junction with the A.342 as shown by a broken line with small arrowheads between points B and C on the attached plan no.1, to be upgraded to a restricted byway.</p> <p>Also, that length of bridleway, from the junction of path no.6 leading north-easterly to its junction with U/C road 8044, as shown by a broken line with small arrowheads between points E and D on the attached plan no.2, to be upgraded to a restricted byway.</p> <p>Width of 12.2 metres (40ft) between points B and C. Approximate length 880 metres.</p> <p>Width of between 7 and 14 metres between points E and D. As depicted on plan 3 attached to the order.</p> <p>Approximate length 50 metres.</p>	53(3)(c)(ii)&(iii)
Charlton St. Peter	6	<p>Length of footpath, from its junction with path no.2, leading generally south past the Charlton Cat and to its junction with the A.342 as shown by a broken line with small arrowheads between points E and F on the attached plan no.2, to be upgraded to a restricted byway.</p> <p>Width between 5 and 9 metres. Partly depicted on plan 3 attached to the order, otherwise 5 metres.</p> <p>Approximate length 190 metres</p>	53(3)(c)(ii)&(iii)

SCHEDULE (continued)

PART I

MODIFICATION OF DEFINITIVE MAP

Parish	Path No	Description of path or way to be upgraded	Modified under Section 53(3) as specified
Wilsford	5	<p>Length of bridleway , from its junction with U/C road 8043 leading generally south easterly to the Wilsford and Charlton St. Peter parish boundary, as shown by a broken line with small arrowheads between points A and B on the attached plan no.1, to be upgraded to a restricted byway.</p> <p>Width 6.1 metres (20ft)</p> <p>Approximate length 475 metres.</p>	53(3)(c)(ii)&(iii)

SCHEDULE

PART II

MODIFICATION OF DEFINITIVE STATEMENT

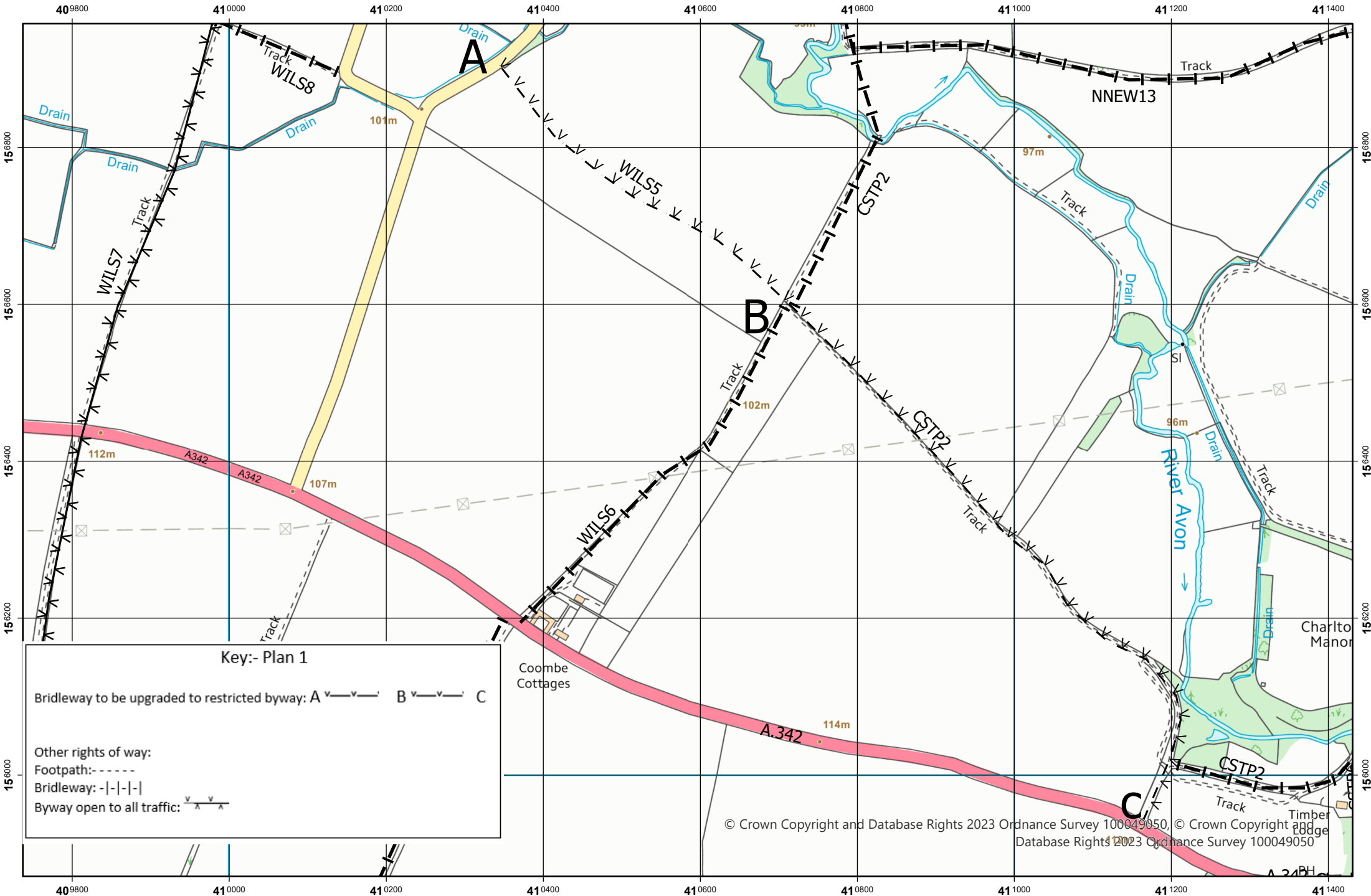
Parish	Path No	Description of path	Modified under Section 53(3) as specified
Charlton St. Peter	2	<p><u>RESTRICTED BYWAY.</u> From the Devizes-Andover road,A.342, approximately 274m west of the Charlton Cat, leading north, north-west to the Wilsford Parish boundary. Also, a spur leading from its junction with Path No.6 north east to its junction with U/C road 8044.</p> <p><u>BRIDLEWAY.</u> From its junction with the Wilsford parish boundary leading north to the North Newnton Parish boundary, south of Cuttonham Farm. Also, a spur , 83 metres north of its junction with the A.342, leading generally, east to its junction with path no.6.</p>	<p>53(3)(c)(ii)&(iii)</p> <p>Relevant date February 22nd 2023</p>

SCHEDULE (continued)




**PART II
- MODIFICATION OF DEFINITIVE STATEMENT**


Parish	Path No	Description of path	Modified under Section 53(3) as specified
Charlton St. Peter	2	(continued from previous page) Width of 12.2 metres (40ft) from its junction with the Wilsford parish boundary at SU 10710 56598 to its junction with the A.342 at SU 11162 55941. Width of between 7 and 14 metres between SU 11432 56024 at its junction with path no.6 and SU 11471 56052 at its junction with U/C 8044, with reference to OS sheet 41/10 revised 1899, published 1900, 1:2500, see plan 3 attached. Otherwise, a width of 4.5 metres. Approximate total length 1.6 km	53(3)(c)(ii)&(iii)
Charlton St. Peter	6	<u>RESTRICTED BYWAY.</u> From its junction with path No.2 leading south to the Devizes-Andover road, A.342, by the Charlton Cal. Width of 5 metres between SU 11430 55850 and SU 11435 55953. Otherwise, width between 5.5 and 9 metres as depicted by OS sheet 41/10 revised 1899, published 1900, 1:2500, see plan 3 attached. Approximate length 190 metres.	53(3)(c)(ii)&(iii) Part subject to ploughing Relevant date February 22nd 2023
Wilsford	5	<u>RESTRICTED BYWAY.</u> From road U/C 8043 ,south of Wilsford Manor, leading south-east to the Charlton St. Peter parish boundary. Width 6.1 metres (20ft) Approximate length 475 metres	53(3)(c)(ii)&(iii) Relevant date February 22nd 2023

The Wiltshire Council Charlton St. Peter 2, 6 and Wilsford 5 Definitive Map and Statement Modification Order 2023- Plan 1



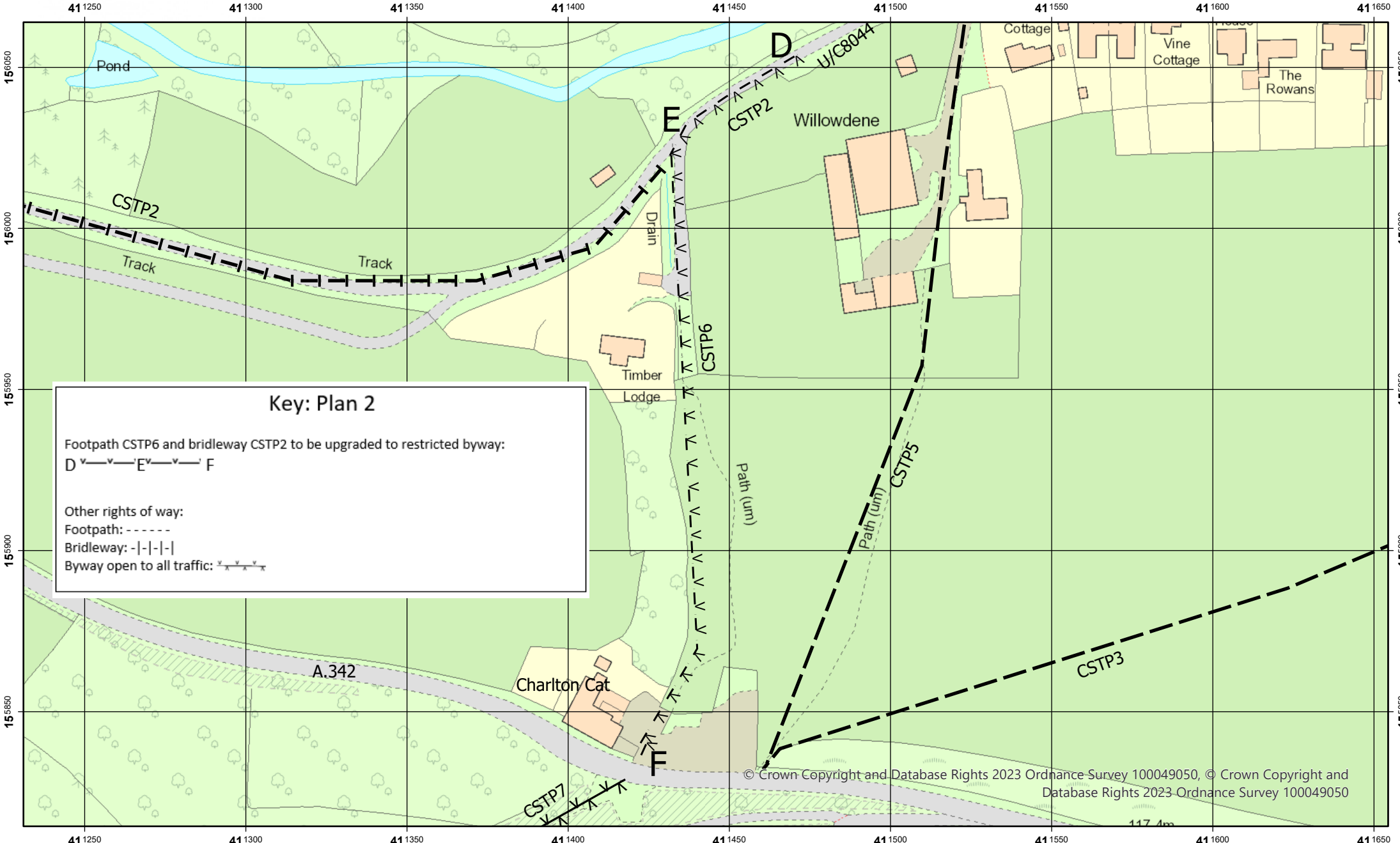
Key:- Plan 1

Bridleway to be upgraded to restricted byway: A  B  C 

Other rights of way:
 Footpath: - - - - -
 Bridleway: -|-|-|-|
 Byway open to all traffic: 

© Crown Copyright and Database Rights 2023 Ordnance Survey 100049050, © Crown Copyright and Database Rights 2023 Ordnance Survey 100049050





Key: Plan 2

Footpath CSTP6 and bridleway CSTP2 to be upgraded to restricted byway:
 D E F

Other rights of way:
 Footpath:
 Bridleway:
 Byway open to all traffic:



